



**REGIONAL SPECIALISED METEOROLOGICAL CENTRE-TROPICAL CYCLONES, NEW DELHI  
TROPICAL WEATHER OUTLOOK**

**DEMS-RSMC SPECIAL TROPICAL CYCLONES NEW DELHI DATED 06.07.2022**

**TROPICAL WEATHER OUTLOOK FOR NORTH INDIAN OCEAN (THE BAY OF BENGAL AND ARABIAN SEA) VALID FOR NEXT 120 HOURS ISSUED AT 0600 UTC OF 06.07.2022 BASED ON 0300 UTC OF 06.07.2022.**

**BAY OF BENGAL:**

YESTERDAYS, A LOW PRESSURE AREA OVER CENTRAL PARTS OF MADHYA PRADESH & NEIGHBOURHOOD LAY OVER KUTCH & NEIGHBOURHOOD AT 0300 UTC OF TODAY THE 06TH JULY, 2022.

SCATTERED TO BROKEN LOW AND MEDIUM CLOUDS WITH EMBEDDED INTENSE TO VERY INTENSE CONVECTION OVER NORTHEAST BAY OF BENGAL, WESTCENTRAL & SOUTH BAY OF BENGAL AND MODERATE TO INTENSE CONVECTION OVER EASTCENTRAL BAY OF BENGAL, ANDAMAN SEA & GULF OF MARTABAN.

**PROBABILITY OF CYCLOGENESIS (FORMATION OF DEPRESSION) DURING NEXT 120 HRS:**

24 HOURS	24-48 HOURS	48-72 HOURS	72-96 HOURS	96-120 HOURS
NIL	NIL	NIL	NIL	NIL

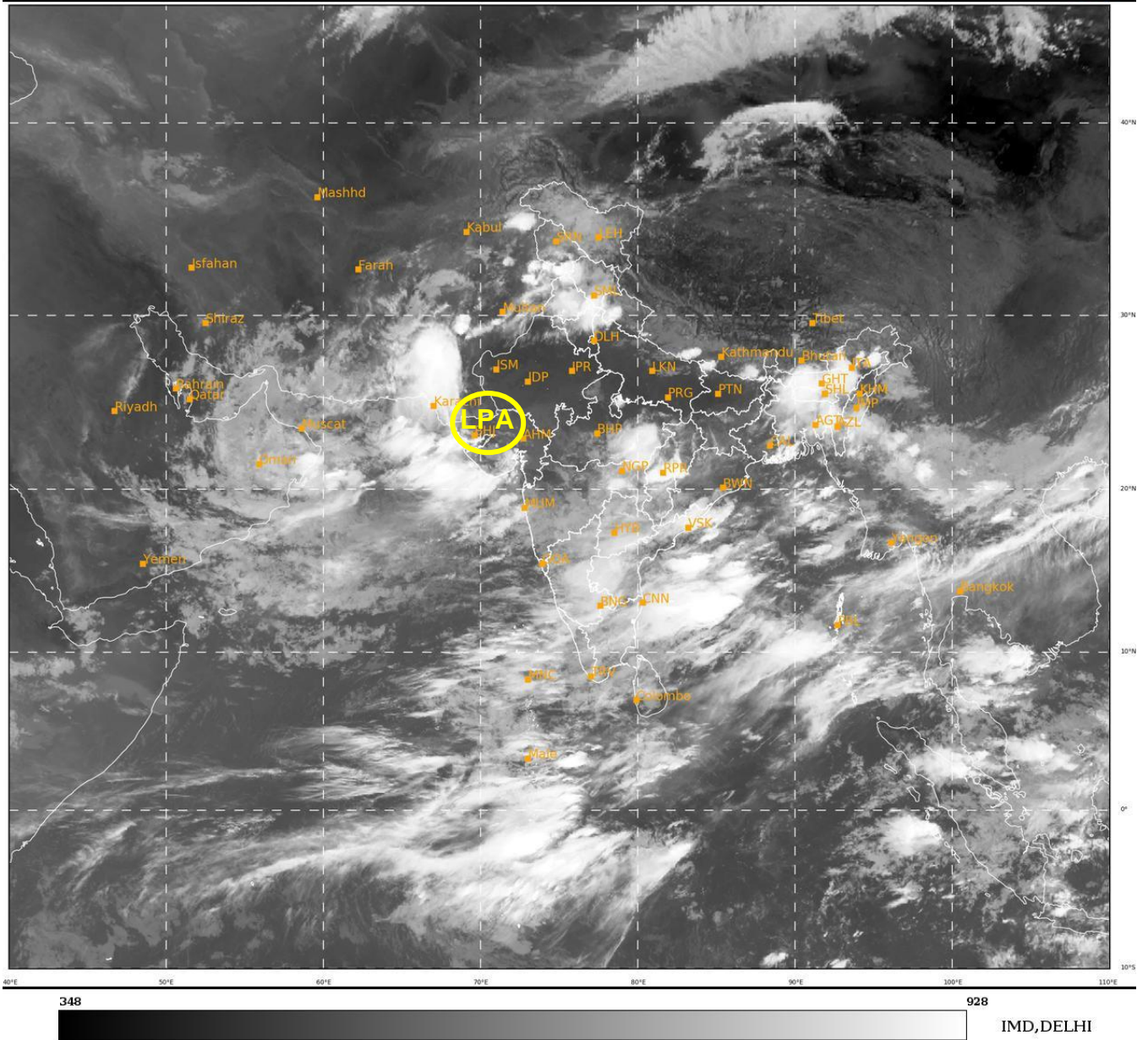
**ARABIAN SEA:**

SCATTERED TO BROKEN LOW AND MEDIUM CLOUDS WITH EMBEDDED INTENSE TO VERY INTENSE CONVECTION OVER NORTH ARABIAN SEA AND GULF OF KUTCH. SCATTERED TO BROKEN LOW AND MEDIUM CLOUDS WITH EMBEDDED MODERATE TO INTENSE CONVECTION OVER GULF OF CAMBAY, CENTRAL ARABIAN SEA, LAKSHADWEEP ISLANDS AREA, SOUTHEAST ARABIAN SEA & COMORIN AREA AND WEAK TO MODERATE CONVECTION OVER SOUTHWEST ARABIAN SEA.

**PROBABILITY OF CYCLOGENESIS (FORMATION OF DEPRESSION) DURING NEXT 120 HRS:**

24 HOURS	24-48 HOURS	48-72 HOURS	72-96 HOURS	96-120 HOURS
NIL	NIL	NIL	NIL	NIL

**REMARKS:** NIL



- LPA STANDS FOR LOW PRESSURE AREA